



by Heart of Iowa

Amazon Fire TV Device USER GUIDE



Compatible with:

Stick 4K, Fire TV Stick 4K, Fire TV Stick 4k Max, & Fire TV Cube Gen3

*Other devices may work, but are not guaranteed.



What you will need for installation:

Amazon Account: *(how to create an Amazon account see page 11)*

Username: _____ Password: _____

WiFi Network:

Username: _____ Password: _____

XtremeTV+ Initial Log In Credentials: *(see email)*

Username: _____ Password: _____



Easy steps to install XtremeTV+

1. Set up FireTV in your Amazon.com account.
2. Install XtremeTV+ app on FireTV.
3. Sit back and enjoy!

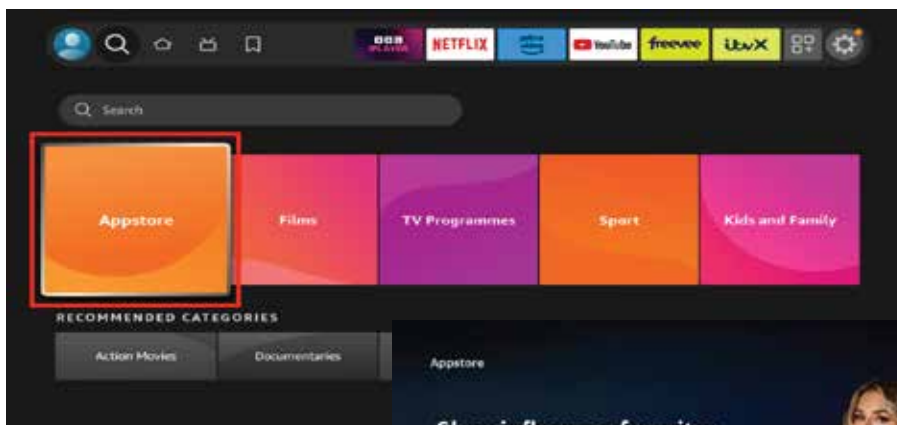
Setting Up Your FireTV

Before you begin, you will need to gather your amazon.com username and password plus have your wireless network ssid and wireless network password ready.

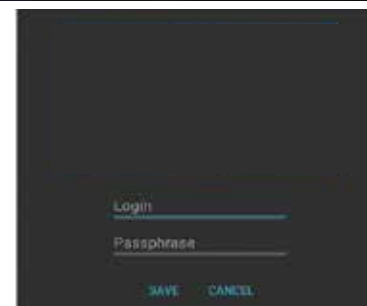
1. Unpack and plug in your firestick to power and an HDMI port on your tv. Note which HDMI port you are plugging in to.
2. Connect to Your network.
3. Sign in with Your Amazon Account. Go to amazon.com/code, login with your username and password, and enter the code from the TV screen.
4. Welcome screen. Press Continue.
5. Save Wi-Fi Passwords to Amazon? Answer No or Yes at your discretion.
6. Who's Watching Fire TV? Select correct profile.

Adding XtremeTV+ To Your Amazon Fire TV

1. Home screen. Go to magnifying glass (Find), then down two clicks to Appstore, enter.
2. Appstore. Click down once and left twice to "Search", enter. Then enter again to search. Type in "Iowa". Go to "Apps & Games" and you will see the "XtremeTV+ by Heart of Iowa" app. Choose and download. This may take a few minutes. After it downloads, click open.



3. Login Page - The device login details can be found in the email that you received from Heart of Iowa. Enter this information and press save.
4. You are now set to start watching our TV service.





Navigating the App Content and Lists

Pressing left, right, up or down on the remote circle will highlight specific items. Pressing in the center of the remote circle will open a highlighted item. To return to the Home screen, press the Home button. Press the Back button to move back to the previous screen.



Watching XtremeTV+

From Home Screen, use the remote to highlight and expand the XtremeTV+ icon and press the center of the remote. This action will open your on-screen Program Guide. To watch a channel, press up or down on the remote ring to any program highlighted in blue and press the Play/Pause button to view a currently-airing program.

Channel Surfing

While watching a currently airing program, press the top of the remote circle to view the next higher numbered channel. Press the bottom of the remote circle to view the next lower numbered channel.

Enter Channel Number Feature

From the Program Guide, press and hold the center of your remote ring to open a screen that allows you to enter a specific channel number and then select Next to move to that channel number in the Program Guide.



For You Feature

This feature is "For You" if you prefer a poster view format instead of a traditional Channel Guide look. For You gives you quick access to Channels You've Watched, Channels Popular in Your Area, your Recent Recordings, Movies On Now, Live Events On Now, Movies On Soon, and Weather. To access For You from the Program Guide, press the Back button on the remote to open the Tab bar, and press the left side of the remote circle to select the For You Option. Use your remote ring to navigate through and select what you would like to watch.

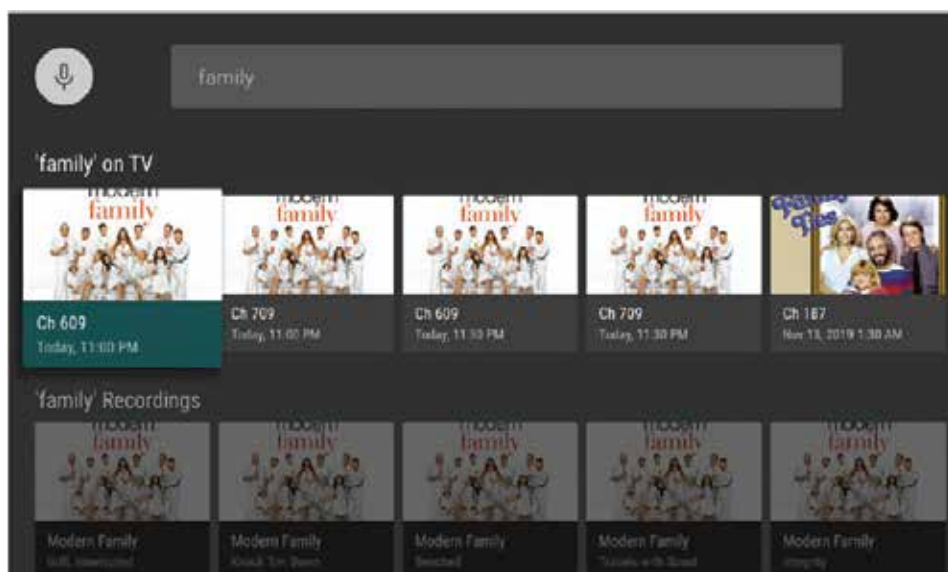
Fast Forward and Rewind Features

There may be times when you want to go back and see that exciting play in the game or fast forward through commercials - don't tell the advertisers. To use this feature during an in-progress or recorded program, press the Fast Forward button on your remote control to advance the program, and press Rewind to go back. The Progress Bar lets you track your movement through a program, and the timer helps you to see how far you are from the end of the program.



Program Search Feature

You can use the Search feature to find Live and Future programs. From the Program Guide, press the Back button to open the Tab Bar, scroll right to the Search feature, press on the lower part of the remote ring, and then press the right side of the remote ring to open a typing pad. You can manually type in a program search by typing in letters of a program that you are searching for. To use the voice search, press and hold the Microphone button while saying the name of the program you are looking for.

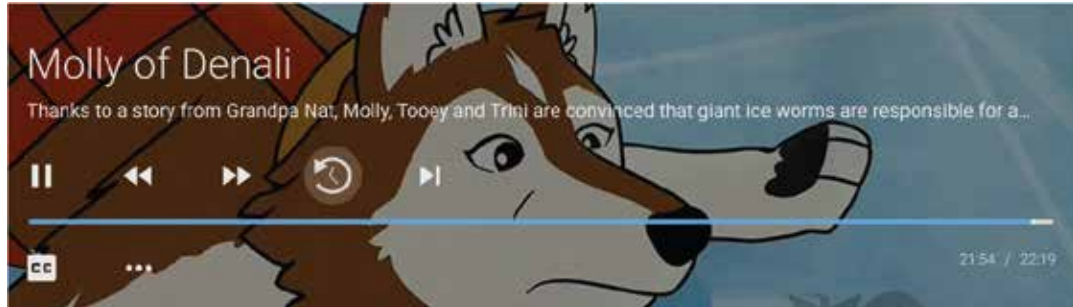


The results will be more specific if you type in or pronounce more letters in the name of the program. You can also use the search feature to find specific types of program, like a program with the name “Today” in the title. To view your search results, highlight Next on the keypad and press the center of your remote. The search results will show currently airing or upcoming programs in the top row. Highlight a program, press the center of your remote, and then select Watch to view the program or Record to add this program to your future recordings. The bottom row will show programs that have been recorded or future recordings.

Highlight a recorded program you want to watch and press the center of the remote to watch the program. You can also select Delete if you want to remove the program from your recordings.

Restart TV

This popular feature lets you go back to the beginning of any currently-airing or in-progress recorded program that has the Restart Option. While watching live TV, press on the center button of the remote ring to open a program Play bar. Use the ring direction buttons to highlight the Restart button. Press the center of your remote to restart the program from the beginning.



Programs that have the Restart option display a Green Restart icon in the program description. There may be programs because of programming restrictions that don't allow for the Restart function.

Watching In - Progress Recordings

If you would like to watch an in-progress recording from the beginning, for the best experience use the Restart feature.

Pause Live TV

Life happens and there may be times when you need to take care of something while watching your favorite program. While watching live TV, press on the Play/Pause button on your remote once to pause the program. After you have let the dog out, raided the refrigerator, or completed any other task, just press the Play/Pause button one more time to continue watching your program.

Quick Guide + Closed Captioning

During a live program press the lower part of the remote control ring to pull down a menu list of your most recently-watched channels. Scroll left or right to choose a new channel and press the center of your remote to watch it.



Closed Captioning can be turned on when the Play Bar is visible by pressing the lower part of the remote control ring and highlighting the CC icon. Press the center of the remote to turn Closed Captioning On or Off.



On-Screen Guide Management

From Home Screen, use the remote to highlight and expand the XtremeTV+ icon and press the center of the remote. This action will open your on-screen Program Guide. Press Up, Down, Left or Right to scroll through your channel lineup. Pressing the center of your remote on a highlighted program will open a program screen with detailed information about the program. This screen will also display Watch, Record and Search options.

To Watch, use your remote to highlight the Watch button and press the center of your remote. To Record a program, highlight the record button and press in the center of your remote ring. See the Record Your Programs section of this guide to learn more about recording programs. Choose the Search feature if you want to see future dates and times that this program will air or programs that have been recorded or scheduled for recording.



Recording Programs From the Guide

Select an upcoming program, press the center of your remote, highlight the record button and press the center of your remote to make a recording of this program. See the Recording Your Programs section of this guide for Recording instructions.

Tab Bar

From the Program Guide, press the Back button on your remote to open the Tab Bar. The Tab Bar allows you to scroll Left or Right to access the Guide, Search, and Settings options. Details on the Search options will be covered in subsequent pages of this guide.



Adding New Devices to Your Service

Before you add a new device to this service, go to Settings in your Tab Bar from an activated device, scroll down and highlight Add Device. Press the center on your remote to generate a Login and Passphrase for the new device. Follow the directions at the beginning of this guide for adding this service to your new Amazon device, and use the displayed Login and Passphrase when you are prompted to activate this service.

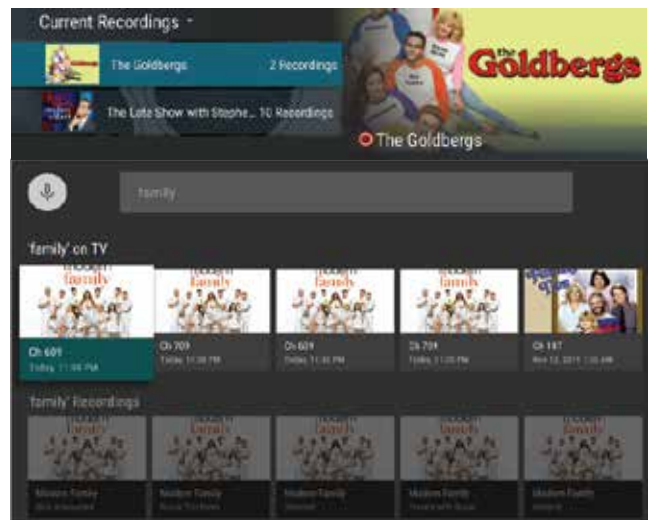
Recording Your Programs

Making a Recording

When you select Record, a screen will display that gives you the options for setting a Recording Series rule for this program. You can record only new episodes (Series - New Only), record all episodes of this program (Series - All), or a One-Time recording of this program. To further manage this recording, go to the Tab Bar and select the Recordings option.

Watching Your Recordings

Recordings can be viewed from either the Recordings or Search screen options. Select Recordings from the Tab Bar to open the Recordings screen. Here you will see a list of your Current Recordings. Scroll through the list, highlight the program you want to watch, and press the Play/Pause button to start watching the program. If there are multiple recordings, scroll and highlight the one you want to watch and press the Play/Pause button to start watching the program.



From any of your Search options, you can see a list of recordings for a specific program by highlighting and pressing on the Search button. This screen will display a list of current or future scheduled broadcasts of this program in the top row. Scroll down to the second row to highlight the list of recorded programs. If the highlighted program has been completely recorded, press the Play/Pause button on your remote to play the recording.

Managing Your Recordings

Current Recordings

To watch or delete current recordings, go to the Tab Bar and select the Recordings option. This screen will display the list of your recorded programs. Scroll up or down and press on the highlighted program that you want to manage.

Scroll up or down to highlight a program and press the Play/Pause button to watch the program. The Checked Red circle to the left of the program indicates that it has not been watched while programs with a Red Play Button have been partially watched. Press Play/Pause on a partially-watched program to view the program where you left off. From this list you can either watch or delete your recorded programs by highlighting the Watch or Delete option. If you choose to Delete a program, you will receive a prompt asking to confirm your deletion.



Future Recordings

Use the Future Recordings feature to manage settings for your future recordings. From the Recordings screen, press the center of your remote control twice, and from the dropdown, choose Future Recording to see a list of programs you have scheduled for recording. Scroll through the list, highlight, and press the center of your remote to open a Future Recording that you want to manage. To assure that you don't miss the beginning or ending of a program, highlight Edit and press the center of your remote to open a Recording Options screen. Highlight and press the center of your remote to edit the Start and End Recording times for the program. Scroll up or down and press the center of your remote to adjust the time when you want your recording to start or end. Once you have finished your changes, highlight Save and press the center of your remote to save the changes. To delete a Future Recording, highlight Delete and press the center of your remote, to receive a prompt asking to confirm your deletion.



Series Rules

Use the Series Rules feature to manage the episodes of a series that you want recorded automatically. From the Recordings screen, press the center of your remote control twice, and from the dropdown, choose Series Rules to see a list of series programs you have scheduled for recording. Scroll through the list and highlight a series that you want to manage. Highlight Edit and press the center of your remote to open a Recording Options screen. Scroll up or down and press the center of your remote to choose Recording Type, Keep At Most, Start Recording, or End Recording options. Recording Type lets you keep All Episodes or Only New Episodes. Keep at Most lets you choose a maximum number of episodes that you want to keep of this series, or you can choose to keep All Episodes.

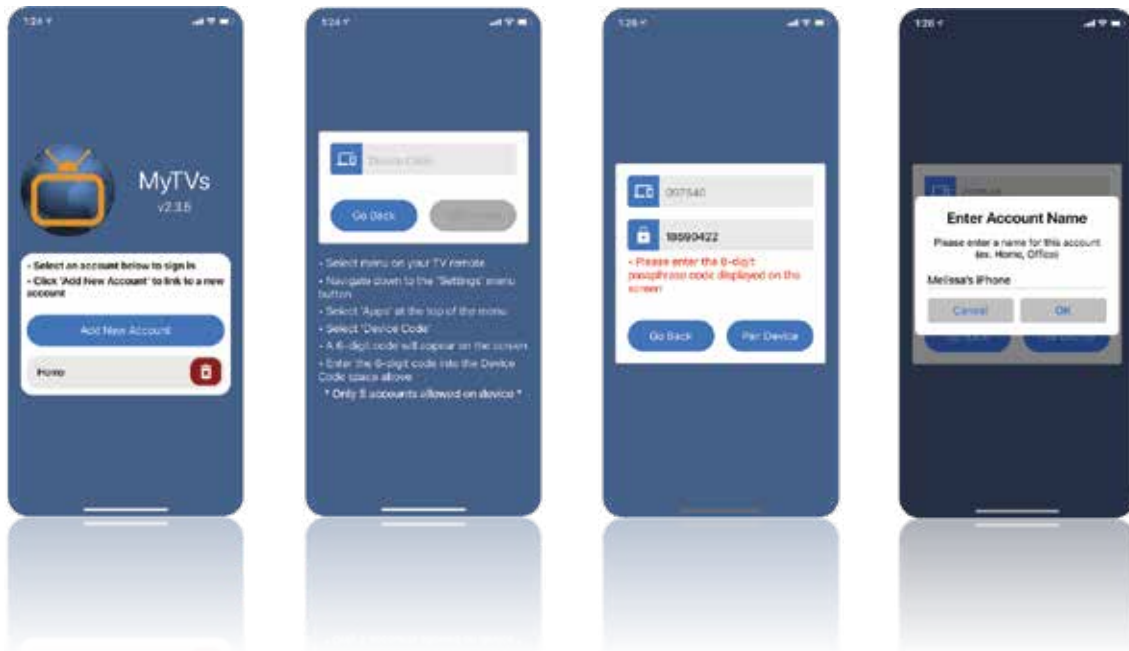
The Start and Stop Recording times option works the same way as it does in Future Recordings. Once you have finished your changes, highlight Save and press the center of your remote control. You can also delete all of the Series Rules for a program by highlighting the Delete button and pressing the center of your remote. This only deletes the Series Rules and does not delete the Series Recordings.



MyTVs Application for Smartphone or Tablet

MyTVs App allows you to watch XtremeTV+ on your smartphone or tablet.

1. Download the MyTVs application from the appropriate user store (Apple **App Store** or Google **Play Store**).
2. Select the MyTVs icon from the screen. Click ADD NEW ACCOUNT.
3. Enter Login code.
(Instruction within the MyTVs app are not relevant for XtremeTV+. Please wait for Passphrase field to appear.)
4. Enter the 8-digit Passphrase into your MyTVs app. Click Pair Device.
5. Create account name for future access.



To Create New Login Credentials for Additional Devices

With your MyTVs App:

Click on the three bars in the top left corner. Click on Settings.

1. New login information for additional devices can be created by clicking on Manage Devices.
2. Enter the Login and Passphrase into your new XtremeTV+ device.
3. This screen also displays the number of remaining devices available for your XtremeTV+ package.

With your FireTV device

Before you add a new device to this service, go to Settings in your Tab Bar from an activated device, scroll down and highlight Add Device. Press the center on your remote to generate a Login and Passphrase for the new device. Follow the directions at the beginning of this guide for adding this service to your new Amazon device, and use the displayed Login and Passphrase when you are prompted to activate this service.

Creating an Amazon Account

Steps to create your new Amazon account:

- Go to Create Amazon Account
- Enter your name.
- Enter your Mobile number or email. Note: If you already have a Google account or other supported services you might be offered to register using these to simplify the process.
- Enter and confirm your password to be used with this account.
- Press the button “Continue”.
- Verify your email. A code will be sent to the email you registered with that you have to fill in here.
- Enter your mobile phone number. You will receive a text message to verify it.

That's it. You should now be signed in with your brand-new Amazon account.



Create account

Your name

Mobile number or email

Password

[i](#) Passwords must be at least 6 characters.

Re-enter password

Continue

By creating an account, you agree to Amazon's [Conditions of Use](#) and [Privacy Notice](#).

Already have an account? [Sign-In](#) ▶
Buying for work? [Create a free business account](#) ▶

